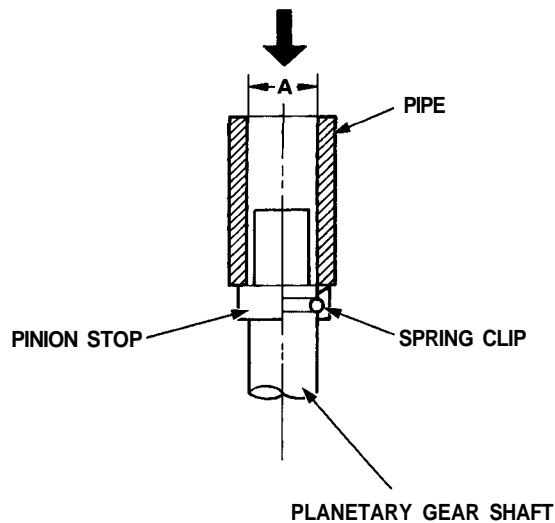


Starting System

Overrunning Clutch Removal

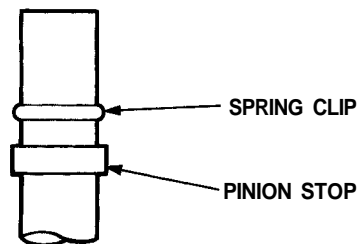
1. Put the end of a pipe (inner diameter 13 mm (0.51 in)) against the pinion stop and strike the pipe to dismount the pinion stop from the spring clip.

A: 13 mm (0.51 in)



NOTE: Be careful not to damage the planetary gear shaft when striking the pipe.

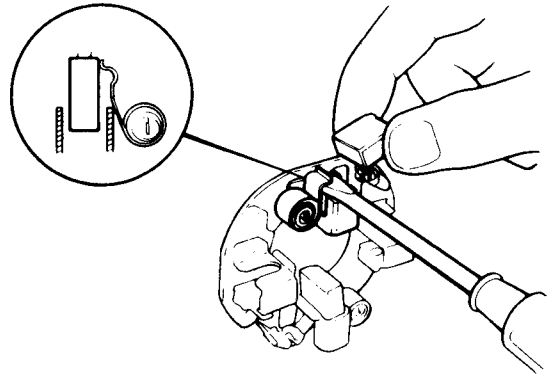
2. Remove the spring clip then pull the pinion stop and overrunning clutch off the shaft.



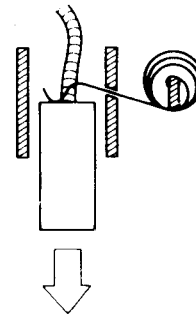
Starter Reassembly

Reassemble the starter in the reverse order of disassembly.

1. Pry back each brush spring with a screwdriver, then position the brush about halfway out of its holder, and release the spring to hold it there.



2. Install the armature in the housing. Next pry back each brush spring again and push the brush down until it seats against the commutator, then release the spring against the end of the brush.



3. Install the end cover on the brush holder.

